



**SANY**

# **SY365H**

## **Hydraulic excavator**

- o **Rated Power** 284 HP/212 Kw 2 000 rpm
- o **Total weight** 36 000 kg / 79 366 lbs
- o **Bucket capacity** 2.32 m<sup>3</sup>/ 3.03 yd<sup>3</sup>



Material and specifications are subject to change without notice. Feature machine in photos may include additional equipment

# SY365H

SANY Hydraulic Excavator



Material and specifications are subject to change without notice. Feature machine in photos may include additional equipment

# Selling Points



SY365H-10 is new generation 30-40T super excavator product for mining produced by SANY Heavy Machinery, and targets to improve customer's investment return. As compared with competitor brands, it has the advantages of "Super excellent performance, super high adaptability, super long service life and super lower maintenance cost". With its excellent quality, SY365H won gold award for annual product market performance of engineering machinery in 2011.

**Super Excellent Performance**

**Super High Adaptability**

**Super Long Service Life**

**Super Lower Maintenance Cost**

# Super Excellent Performance

## Efficient and Low Consumption

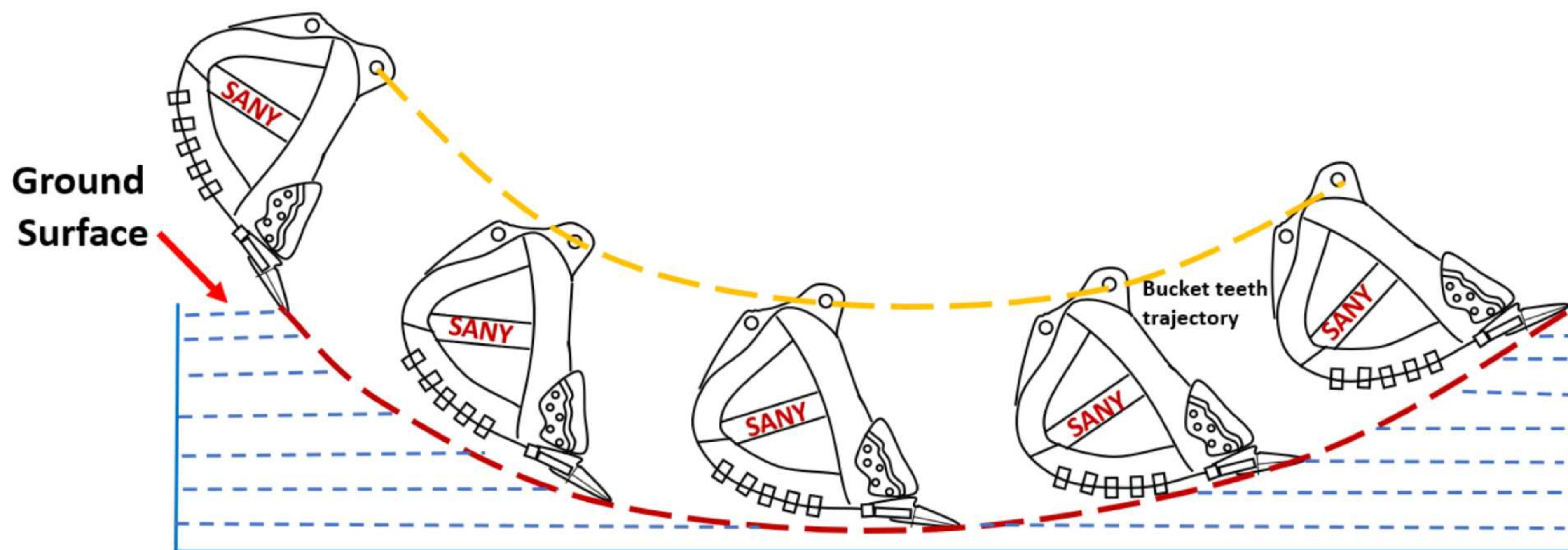
With “positive flow” system and “DOMCS” engine-pump-valve integrated dynamic hunting intelligent matching control system developed independently by SANY, the efficiency and fuel consumption surpass competitor brands. The efficiency is 8% higher and the fuel consumption is 10% lower.

As compared with the model of previous generation, the power of Isuzu AA 6HK1XKSC engine is increased by 6% and the torque is increased by 20%. Higher power performance could help the customer solve the difficulties under heavy-duty conditions.



## Super High Digging Force

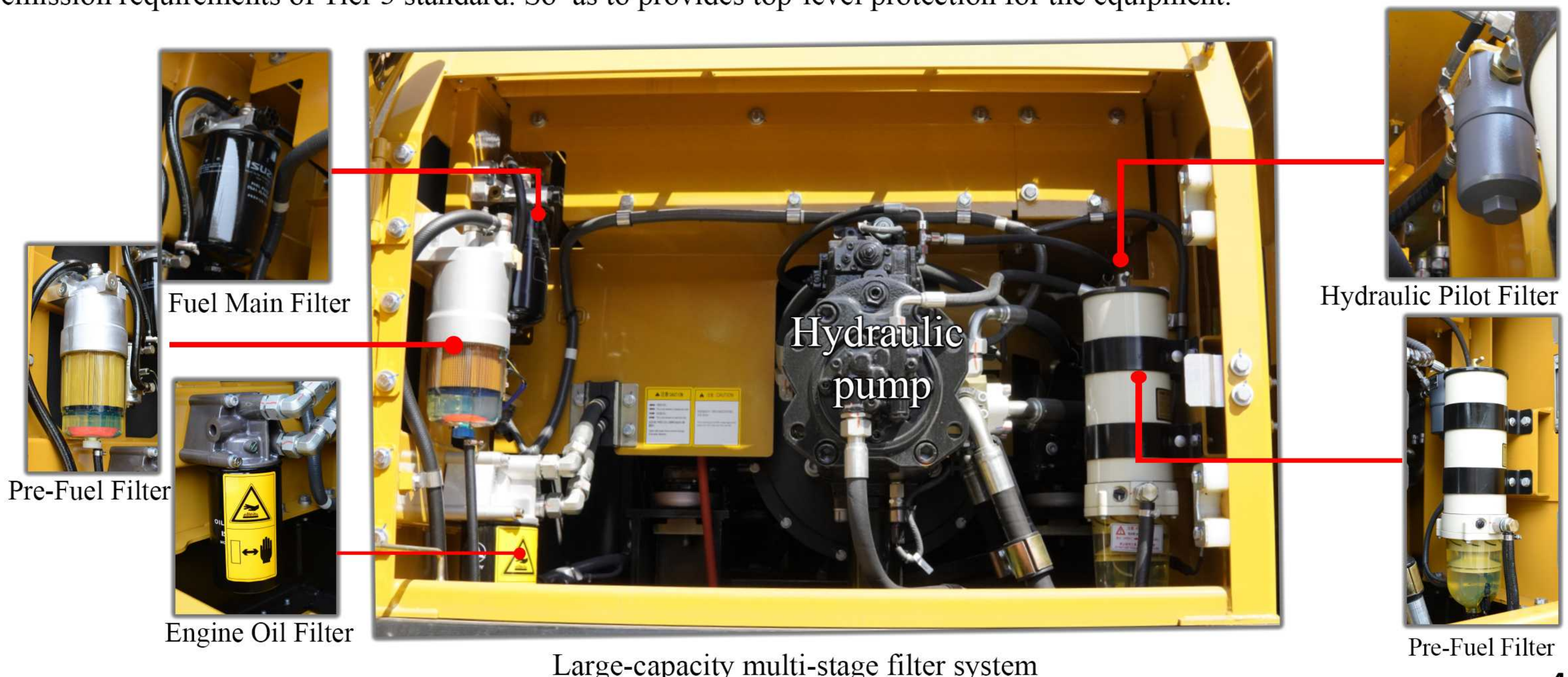
By optimizing the hinge point, the functioning scope of digging force becomes wider. By optimizing moving trajectory of the mechanism and bucket shape, the impact and resistance against the machine are reduced when excavating, excavating speed is improved an operating efficiency is increased by 10%. Service life of the bucket is doubled.



## Super High Adaptability

### Large-capacity Multi-stage Filter System

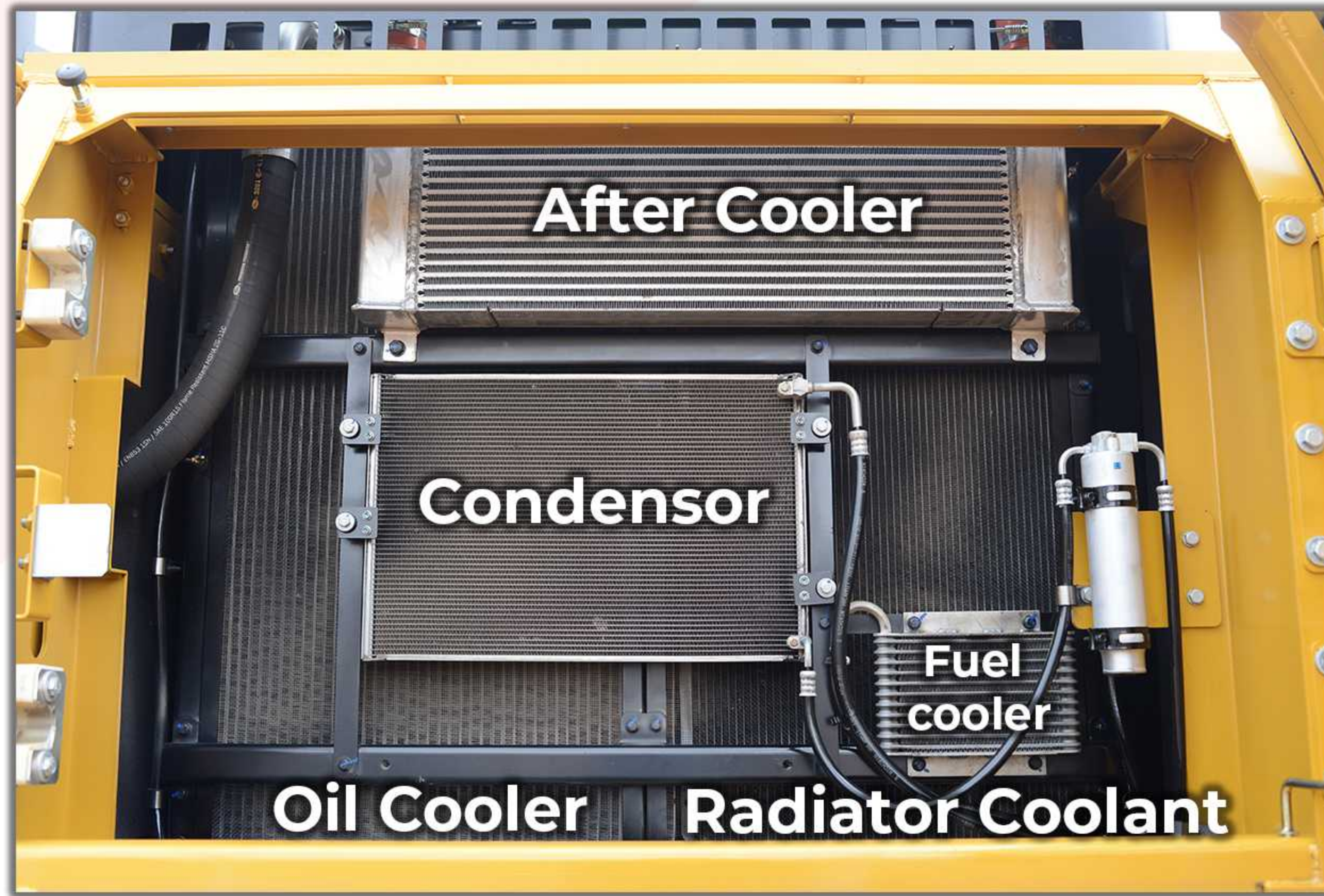
Initiative large-capacity multi-stage filter system is introduced to cope with fuel oil of different quality levels, and meet emission requirements of Tier 3 standard. So as to provides top-level protection for the equipment.



# Super High Adaptability

## The Machine Serves Several Purposes

The capacity of water radiator is improved by 10%, the capacity of oil radiator is improved by 5%, the equipment is always working under optimal temperature, the system efficiency is high and the energy consumption is low.



## Safe & Comfortable



Blinds on the side and rear windows



Emergency roof door



Top protective screening



Fire extinguisher



Escape hammer



Hydraulic lock out



Auto Air Conditioner



Water cup holder and ashtray



Seat belt



Anti-skid plates

### Safe & Comfortable

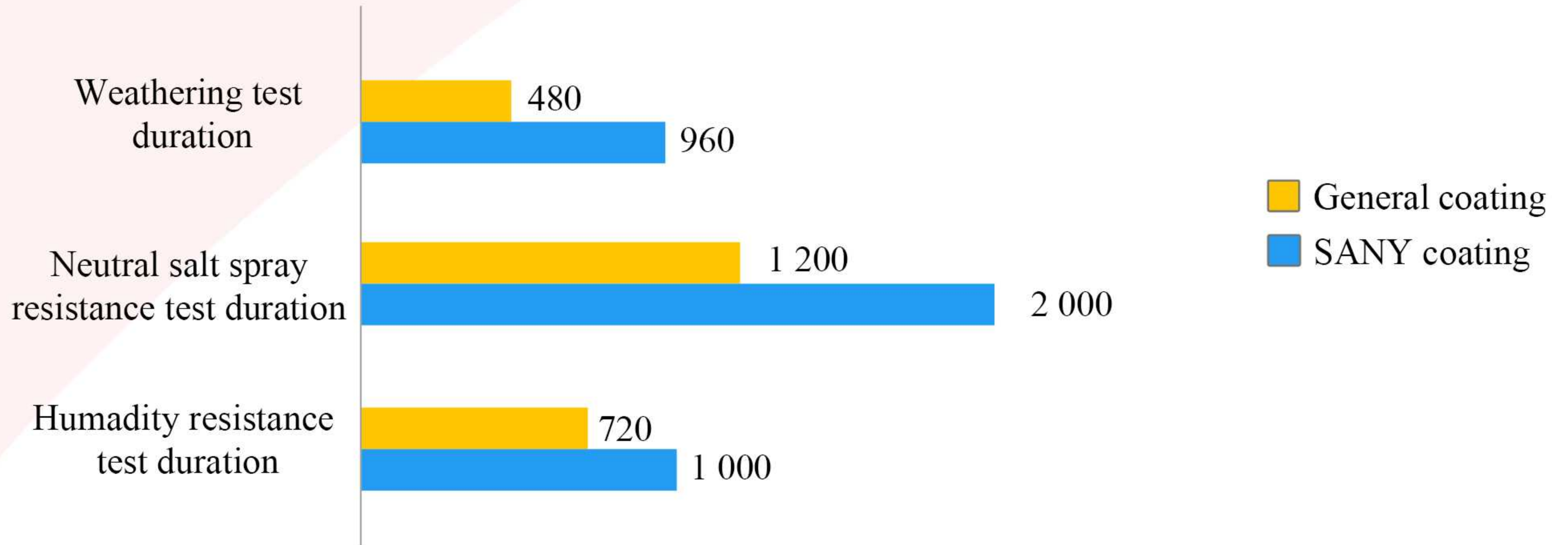
- High-end interiors, wide vision, air suspension seats, excellent shock and noise reduction performance, let you have a more comfortable.
- Equipped with blinds on the side and rear windows, so as to provide comfortable working conditions for the operator.
- Equipped with hydraulic lock out, top protective screening, anti-skid plates to increase operator safety.
- Automatic airconditioner, Cigarette lighter, seat belt, ashtray, water cup holder, file box, fire extinguisher, escape hammer, reading light are all available.

# Super High Adaptability

## High Corrosion Resistant Coating

By Cooperating with world known paint brands, aging life of the paint reaches the level of competitor brands and the adaptability is improved by 40%.

Comparison of coating endurance test data



# Super Long Service Life

Through the accumulator over 15 years, service life of SY365H exceeds 20 000h under mining conditions, is 20% higher than general excavator and surpasses competitor brands with the help of initiative “Three dimensional” design test system for large scale excavator.

### Five major structural members

As compared with the product of previous generation, the service life of key structural members like boom, bucket rod, platform and undercarriage is double

### Hydraulic system

Delivery cleanliness of hydraulic system reaches NAS7 and is not only higher than competitor brands but also higher than industrial standard.

### Core parts

Core parts like main pump, main valve, oil cylinder and retarder guarantee super long life.



# Super Long Service Life

## Key Structural Members

With most advanced international methods including optimization design of structural members, stress test, research of weld and plates, endurance test, 100% UT detection for key components and fatigue test for two axles, the service life of key structural members is improved comprehensively.



As compared with the product of previous generation, the service life of key structural members like boom, bucket rod, platform and undercarriage etc, is double.



Motion trail of bucket bottom is optimized, digging speed is increased, working efficiency is improved by 10%, etc. With professional bucket design for stonework, It is suitable for heavy duty operations such as quarry, etc.



The quality of mining-type four-wheel & one-belt is improved, and the service life is doubled

# Super Low Maintenance Cost

## Super Easy Management

Equipped with four-dimensional construction management system independently developed by SANY, can improve the maintenance convenience of maintainable parts, and convenient maintenance design in allusion to severe mining conditions, makes equipment management easier and simpler



### Engine Compartment

Engine compartment volume is increased by 20% and electronic pump is added, so that abnormal misfire can be solved rapidly.

**\*20%↑**

### Air filter element

The space for replacing external air filter element is 30% larger than that of general excavator and the filter element can be replaced without the help of any tool.

**\*30%↑**

### Pump chamber

Pump chamber volume is increased by 30% and the operating space for filter element replacement is increased by 20%.

**\*30%↑, 20%↑**

\*As compared with general excavator

# Super Low Maintenance Cost

## Maintenance Convenience

In allusion severe working conditions of the mine, the design of maintenance convenience of the maintainable parts is improved. "Big space, Easy to operator". Maintenance space for various maintainable parts increases by 20%-30% and makes the operation easier.



Easy to replace diesel oil filter element



Easy to replace air filter element

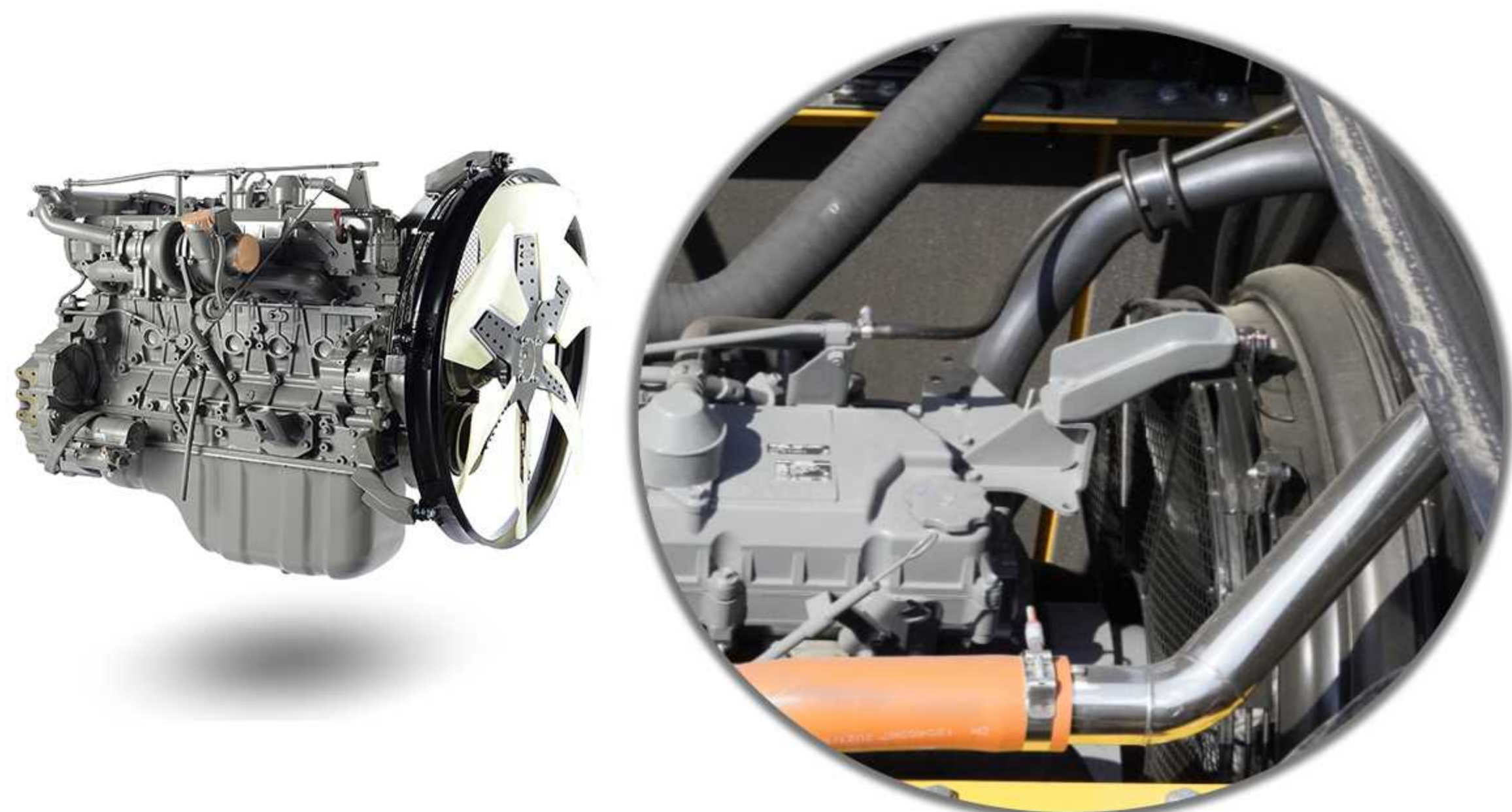


Easy to perform engine maintenance

# Product Introduction

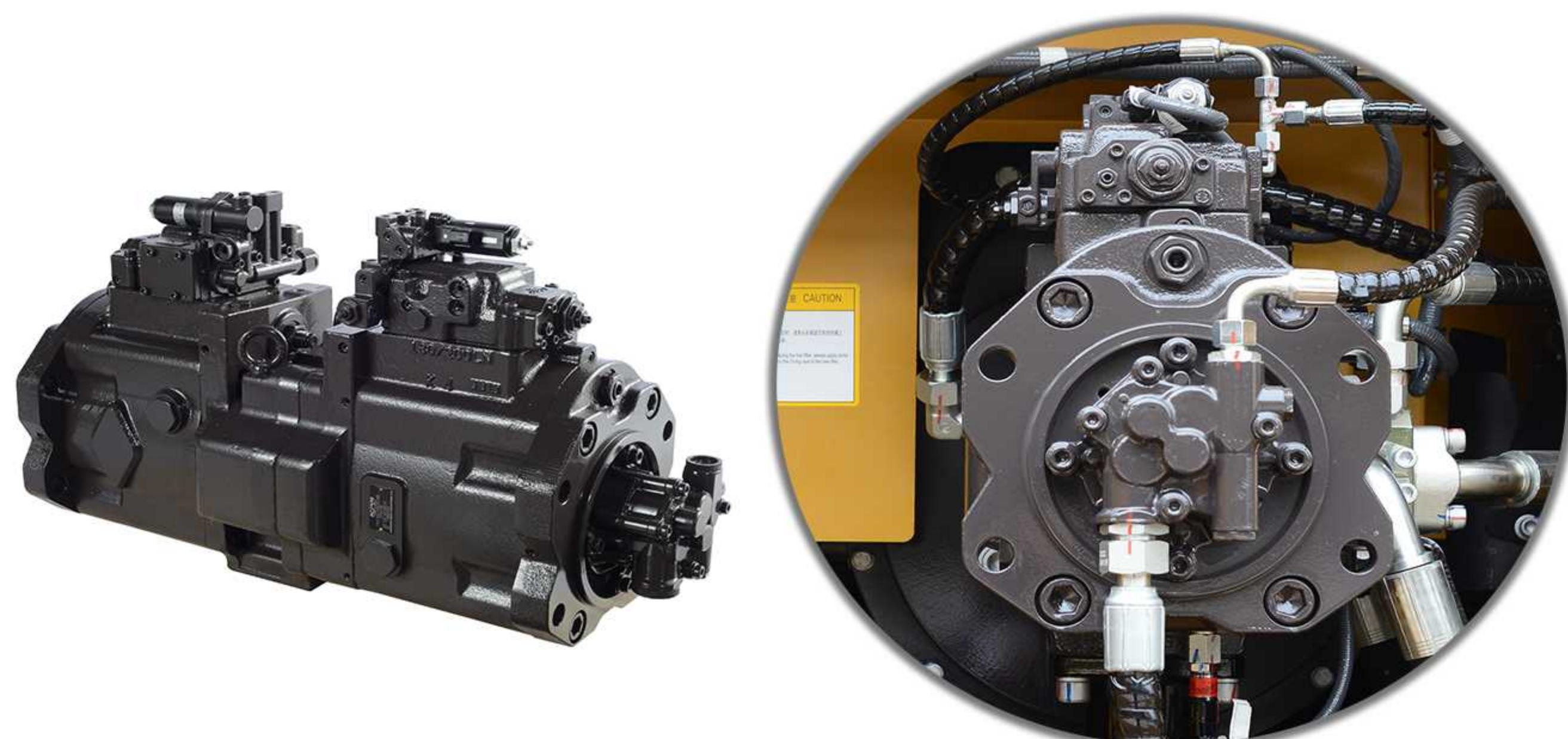
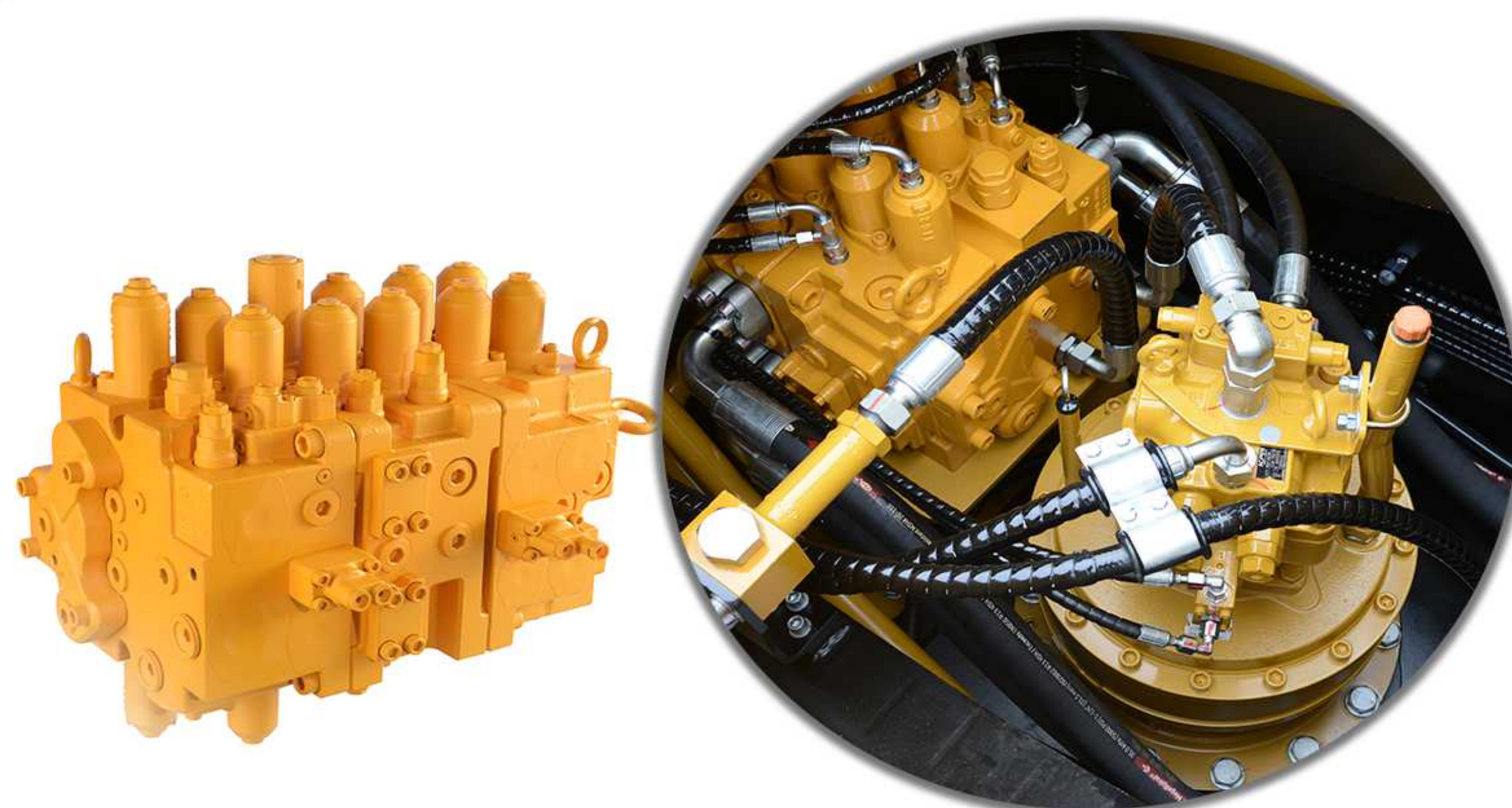
## Main Configuration

Core components like pumps, valves and engine etc, are designed jointly with proprietary intellectual property rights, and manufactured by world famous manufactures to ensure high quality and satisfy



Isuzu AA 6HK1XKSC engine meets emission standard of Tier 3, the displacement and the torque are generally higher than competitor brands. It outputs high power and helps the customer to solve the operating difficulties of heavy-duty working condition.

Kawasaki 32NA main valve is developed and designed according to customer requirements of SANY and has outstanding advantages including "high reliability, low pressures loss, high flow distribution efficiency and smooth compound control action". It helps the customer create greater value.



Kawasaki 160cc dual-ratio positive-flow main pump takes full advantages of the flow and realizes demand equal to supply. As compared with negative flow system, it reduces the loss of neutral-position return, and mean while response speed is higher and capacity loss is reduced.



# SPECIFICATIONS

## ENGINE

Model ..... Isuzu AA 6HK1XKSC  
 Type ..... Electronic injection,  
 6-cylinder, 4-stroke, inter-cooling and water-cooled  
 Aspiration ..... Turbocharged  
 Horse Power  
 ISO 9249 / SAE J1349 ..... Nett 212 Kw 284 HP  
 Rated rpm ..... 2 000 rpm  
 Numbers of Cylinders ..... 6  
 Bore ..... 115mm  
 Stroke ..... 125mm  
 Piston Displacement ..... 7.8L  
 Fan Drive Method ..... Belt drive  
 Governor ..... All-speed control, electronic CRI  
 \*Emission CN Tier3

## HYDRAULIC SYSTEM

Control Type ..... Double proportional electric control  
 Main pump  
 Type Axial ..... variable double plunger pump  
 Model ..... Kawasaki K5V160DTH1X4R-9T16-BV  
 Maximum flow ..... 2 x 320 L/min  
 Relief Pressure  
 Working Circuit ..... 34.3 Mpa 350 kg/cm<sup>2</sup>  
 Travel circuit ..... 34.3 Mpa 350 kg/cm<sup>2</sup>  
 Swing circuit ..... 28.5 MPa 290 kg/cm<sup>2</sup>  
 Pilot circuit ..... 3.9 Mpa 39 kg/cm<sup>2</sup>  
 Hydraulic cylinders  
 (no. of cylinder – bore x stroke x rod diameter)  
 Boom ..... 2 - 140 mm x 1 480 mm x 100 mm  
 Arm ..... 1 - 170 mm x 1 725 mm x 120 mm  
 Bucket ..... 1 - 150 mm x 1 285 mm x 100 mm

## TRANSMISSION

Max travel speed  
 Hi ..... 5.5 km/h  
 Lo ..... 3.5 km/h  
 Swing Speed ..... 9.5 rpm  
 Gradeability ..... 70% 35°  
 Maximum drawbar pull ..... 320 kN 32 630kg

## UNDERCARRIAGE

Number of Track Shoes ..... 49  
 Carrier Roller (each side) ..... 2  
 Track Roller (each side) ..... 9

## DIGGING FORCE

Bucket Digging Force ..... 235 kN  
 Arm Digging Force ..... 180 kN

## COOLANT & LUBRICANT

Fuel Tank ..... 690L  
 Hydraulic Oil Tank ..... 380L  
 Engine Oil ..... 36L  
 Cooling Tank ..... 28L  
 Final Drive ..... 2\*8.5L  
 Swing Machinery ..... 10.5L

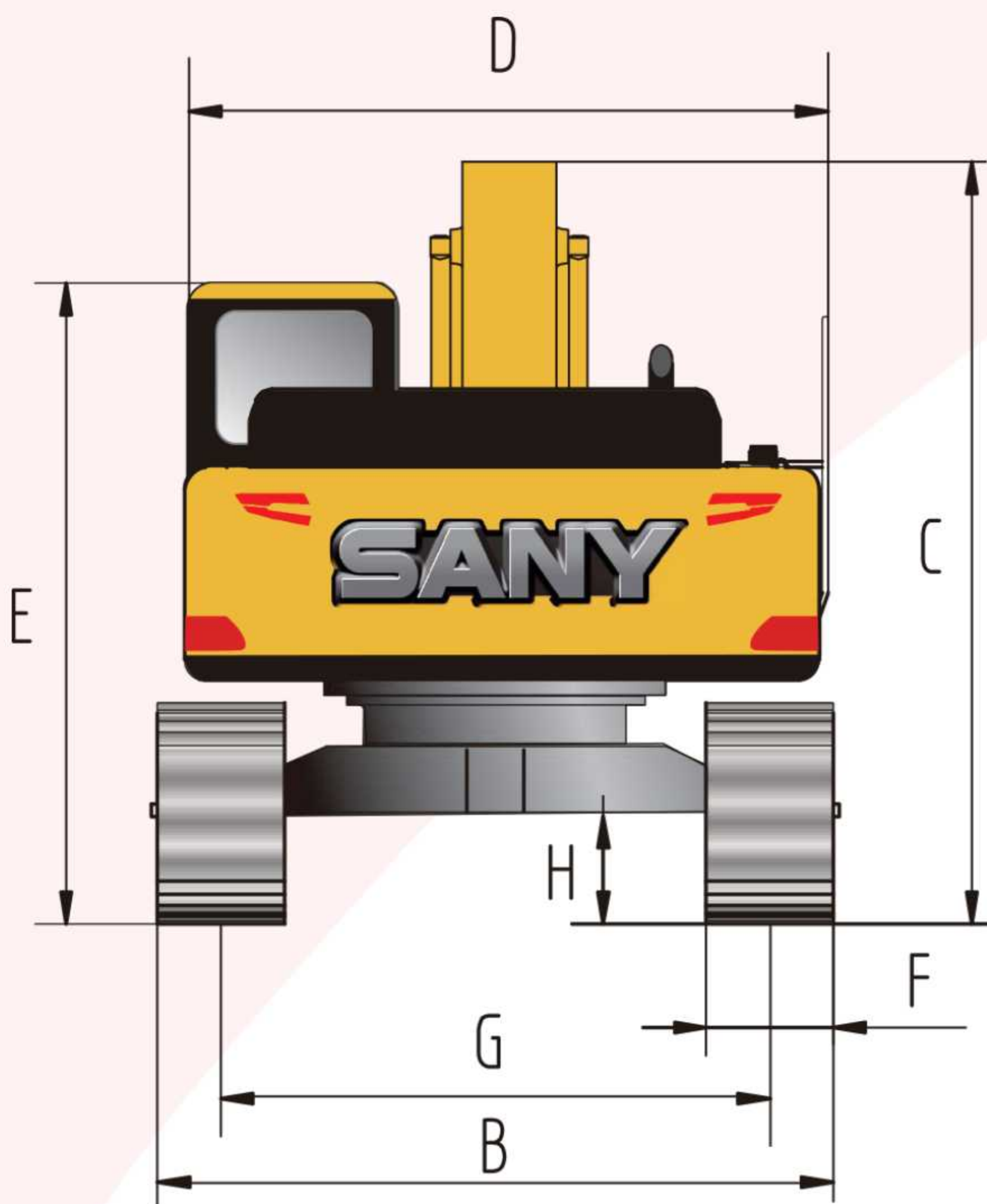
## OPERATING WEIGHT

Operating weight including 6 500 mm Boom length, 2 400 mm  
 Arm length, Bucket 2.32 m<sup>3</sup> SAE , Shoe width 600 mm triple  
 grouser.

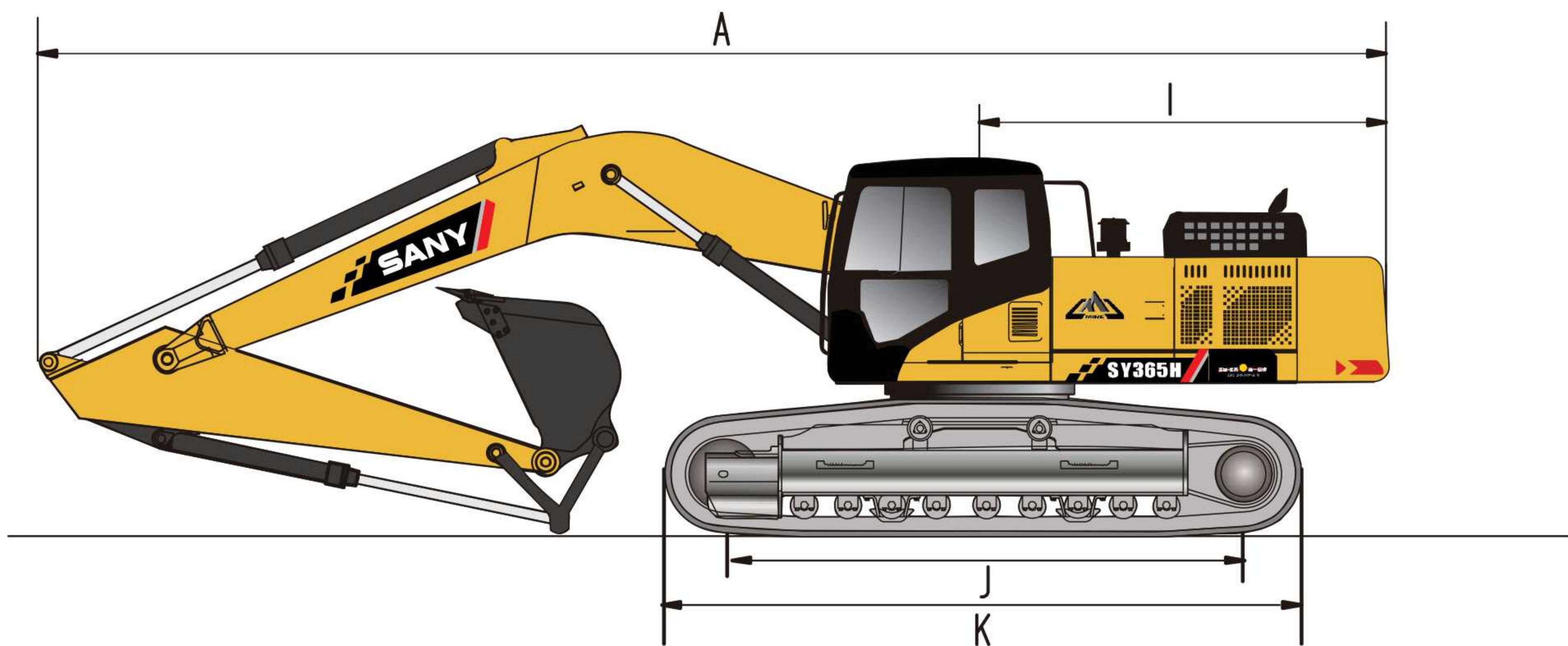
Shoes	Operating weight	Ground Pressure
600 mm	36 000 kg	65 kPa 0.66 kg/cm <sup>2</sup>
800 mm	36 434 kg	87 kPa 0.88 kg/cm <sup>2</sup>

# SPECIFICATIONS

## OVERALL DIMENSIONS (mm)



Model (mm)		SY365H
A	Overall length	11 530
B	Overall width	3 190
C	Overall height (to top of Boom)	3 545
D	Upper body width (Cab top)	3 150
E	Overall height (to Top of Cab)	3 320
F	Width of standard track shoe	600
G	Track gauge	2 590
H	Ground clearance (minimum)	550
I	Tail swing radius	3 560
J	Track length on ground	4 140
K	Track overall length	5 065



## BACKHOE BUCKET. ARM COMBINATION

Bucket Capacity (heaped)	Width		Weight	Number of Teeth	Arm Length 2 400 mm	Arm Length 2 600 mm
	Without Side Shroud	With Side Shroud	With Side Shroud			
2.1 m <sup>3</sup>	1 476 mm	1 701 mm	2 000 kg	5		■
2.32 m <sup>3</sup>	1 815 mm	2 004 mm	2 065 kg	6	●	

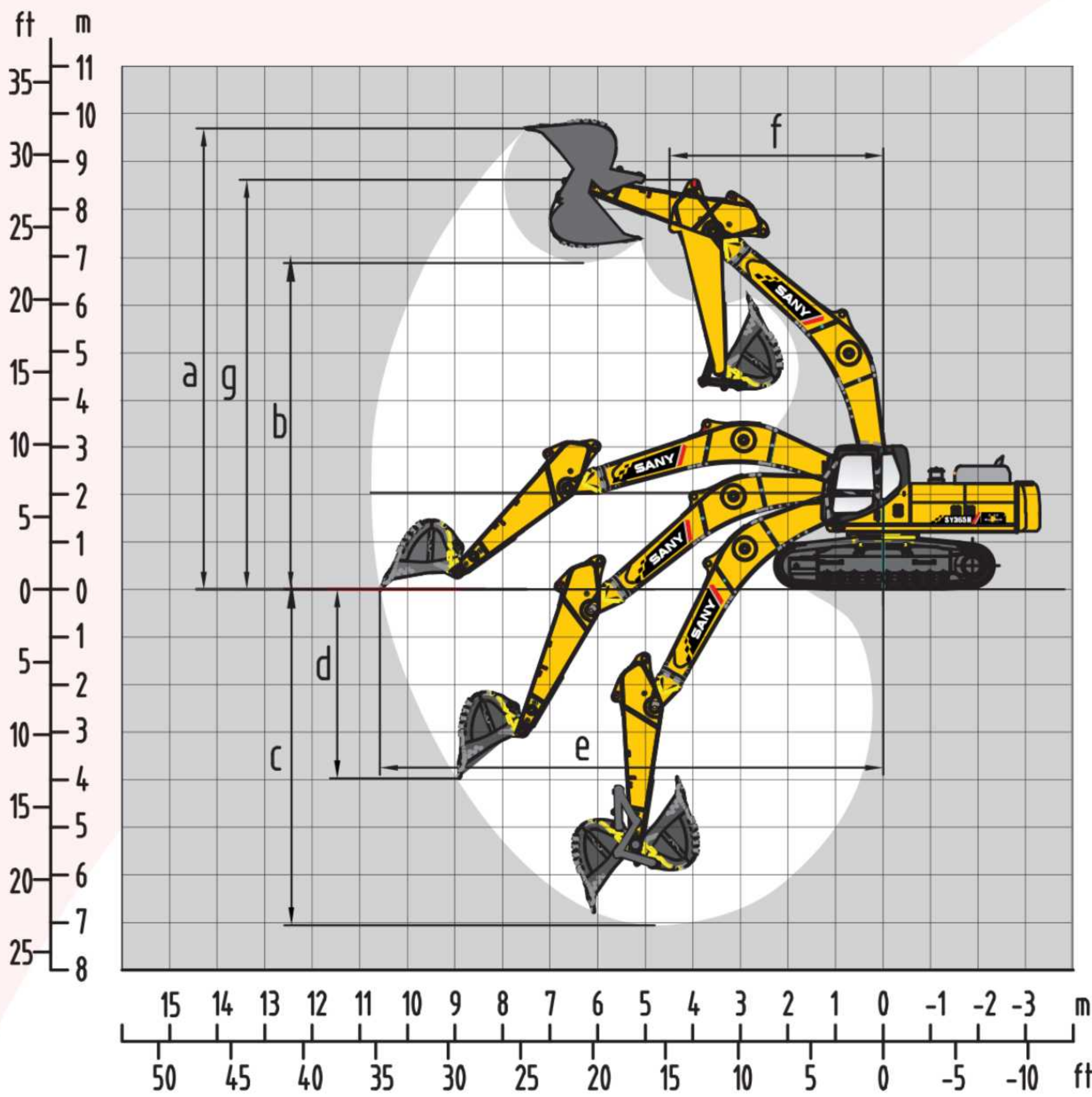
Maximum material density (kg/m<sup>3</sup>):

● 1 300 kg/m<sup>3</sup>

■ 1 600 kg/m<sup>3</sup>

# SPECIFICATIONS

## WORKING RANGE



Operating Range: mm	SY365H
A. Max. Digging Height	9 890
B. Max. Unloading Height	6 920
C. Max. Digging Depth	7 050
D. Max. Vertical Digging Depth	3 970
E. Max. Digging Distance	10 780
F. Min. Swing Radius	4 495
G. Max. Height at Minimum Swing Radius	8 600

## STANDARD EQUIPMENT

### Engine

- Start motor 24V / 5.0 kW
- Alternator 50A
- Air Pre-cleaner
- Engine oil filter
- Engine oil cooler
- Radiator with protective screen
- Fan cover
- Engine Partition Cover
- Automatic idle speed system
- Accelerating system

### Undercarriage

- Travel brake
- Track roller guard
- 600 mm triple grouser
- Track frame undercover
- Reinforced idler bracket

### Operator Cab

- Seat belt and Fire Extinguisher
- Cigarette lighter
- Automatic Air Conditioner
- Ashtray
- Water cup holder
- File box
- AM-FM radio with digital clock
- Emergency roof door
- Emergency escape hammer
- Hydraulic lockout control
- Top Protective Screening

### Work Equipment

- Boom 6.5 m
- Arm 2.4 m
- Bucket 2.32 m<sup>3</sup>

### Hydraulic

- Operating mode selector switch
- Spare oil port for control valve
- Pilot Filter

### Swing Platform

- Toolbox
- Swing brake

### Other

- Standard battery, 2 x 12 V/120Ah
- Lockup engine hood
- Lockup fuel filter cap
- Anti skid film and handrail
- Travel direction mark
- Hand grease gun

## OPTIONAL EQUIPMENT

### • Arm

- 2.6 m
- 2.9 m

### • Attachment

- Bucket 2.1 m<sup>3</sup>

### • Track shoe

- 800 mm Triple Grouser

### • Electrical

- Alarm lamp
- Rear-view camera

2021.06/CENSY365CDI3K000



**SANY**

SANY Heavy Machinery Co., Ltd  
Industrial Park, Ping'an Town, Fengxian  
District Shanghai City, China  
[www.sany.com.cn](http://www.sany.com.cn)

Inquiries To :

**PT SANY PERKASA**

Address:

Komplek Rukan Puri Mutiara Blok A67-68

Jl Griya Utama, Sunter Agung - Jakarta Utara 14350

Hotline: +62-21-6531 8350, +62-21-812-966-9000

Email: [sales@sanyperkasa.com](mailto:sales@sanyperkasa.com)

For more information, please visit: [www.sanyperkasa.com](http://www.sanyperkasa.com)